

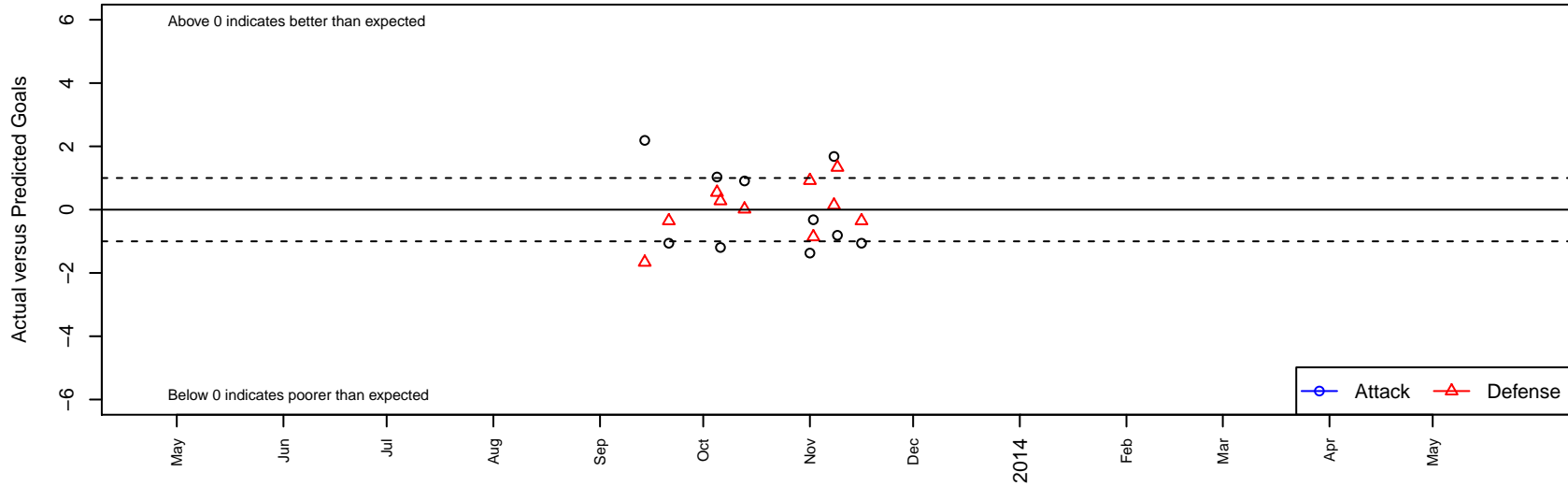
FC Elk Grove 02 Navy G01

, CAN
 G01 total strength=1099
 attack=3.54 defense=2.24
 alt names used:
 FC Elk Grove 02 Navy G01
 FC Elk Grove 02 G Navy

Venues played:
 NorCal Premier F11 – Region 6 U12



FC Elk Grove 02 Navy G01
 Dots are actual minus expected GF (blue circles) and GA (red triangles).
 Blue line is smoothed change in attack strength. Red is smoothed change in defense strength.



	date	home		away		venue	pred.home	pred.away
6578	2013-11-16	Sacramento United Extreme Red G01	1	FC Elk Grove 02 Navy G01	1	NorCal Premier F11 – Region 6 U12	0.65	2.06
6473	2013-11-09	FC Elk Grove 02 Navy G01	3	Placer United 02 Red G01	0	NorCal Premier F11 – Region 6 U12	3.81	1.34
6456	2013-11-08	FC Elk Grove 02 Navy G01	6	Woodland Fire G01	1	NorCal Premier F11 – Region 6 U12	4.32	1.14
6333	2013-11-02	Woodland Fire G01	2	FC Elk Grove 02 Navy G01	4	NorCal Premier F11 – Region 6 U12	1.14	4.32
6298	2013-11-01	Davis Legacy Stampede G01	1	FC Elk Grove 02 Navy G01	0	NorCal Premier F11 – Region 6 U12	1.92	1.37
5940	2013-10-13	Loomis YSC Storm G01	1	FC Elk Grove 02 Navy G01	2	NorCal Premier F11 – Region 6 U12	1.02	1.09
5781	2013-10-06	FC Elk Grove 02 Navy G01	1	California Cougars G01	0	NorCal Premier F11 – Region 6 U12	2.19	0.28
5671	2013-10-05	FC Elk Grove 02 Navy G01	3	Ajax United 02 Elite G01	2	NorCal Premier F11 – Region 6 U12	1.97	2.54
5363	2013-09-21	FC Elk Grove 02 Navy G01	1	Sacramento United Extreme Red G01	1	NorCal Premier F11 – Region 6 U12	2.06	0.65
5198	2013-09-14	Placer United 02 Red G01	3	FC Elk Grove 02 Navy G01	6	NorCal Premier F11 – Region 6 U12	1.34	3.81